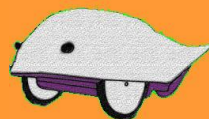


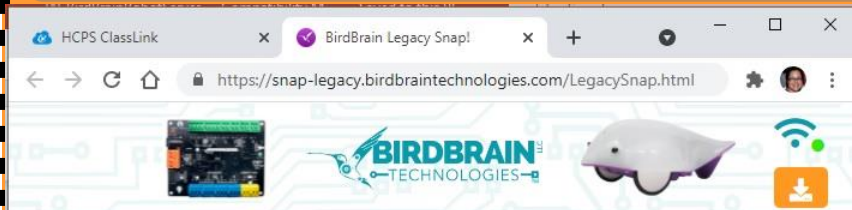
Finch 1.0 Snap! Card 01

New!

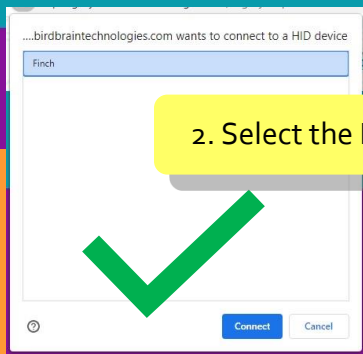
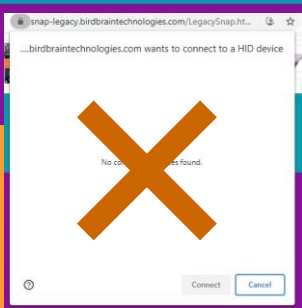
OPENING Snap!



1. No installation necessary! Go to <https://snap-legacy.birdbraintechnologies.com/LegacySnap.html>



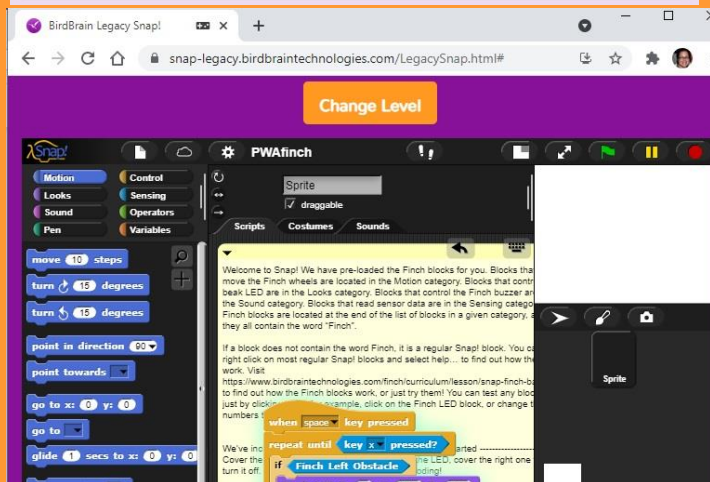
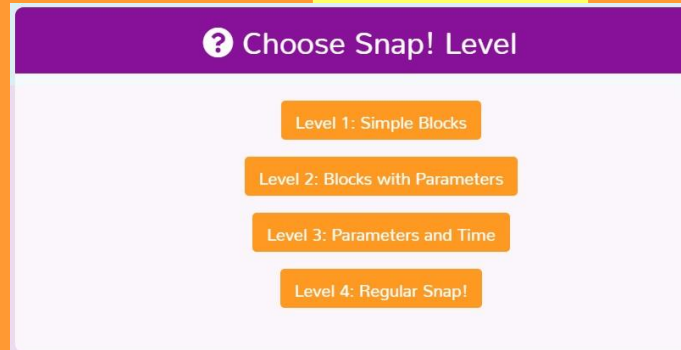
FIND ROBOTS



2. Select the Finch.

<https://snap-legacy.birdbraintechnologies.com/LegacySnap.html>

4 Choose level 4



4. You are now ready to program your FINCH 1.0 robot!

Operating Systems Supported:

- [Windows](#)
- [Mac](#)
- [Linux](#)
- [Chrome](#)

Make A Card

1. Fold the card in half.

2. Put glue on the back.

3. Cut along the dashed line.

