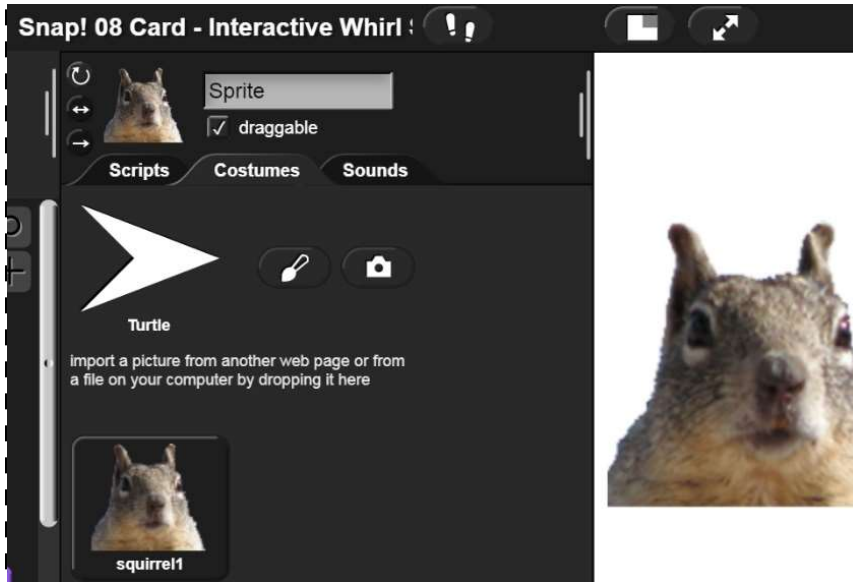


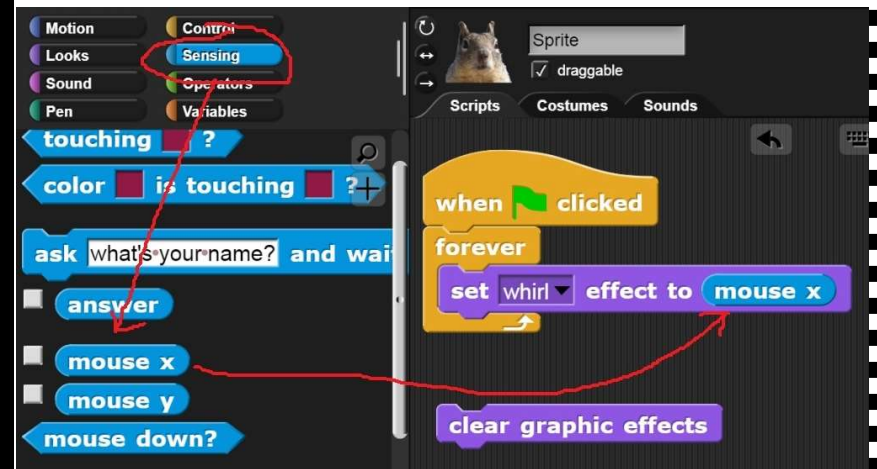
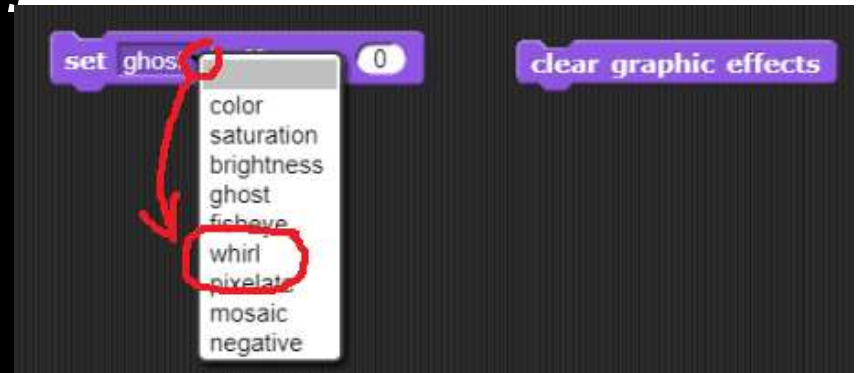
Snap! Card 08

# 8. Interactive Whirl

1. Select the file symbol and select **Costumes**. Replace the turtle by selecting a Squirrel head.



2. Under purple **Looks** you have a variety of **set effect by 0** options, in this case we are selecting the **whirl** effect. You also can use a **clear graphic effects** block to reset all effects in the **Looks** category.



3. You should be familiar with all of the bricks in the code with the exception of light blue **Sensing** and drag the **mouse x** variable into the number spot.  
<https://snap.berkeley.edu/> and choose **Run Snap!**

Make A Card



1. Fold the card in half.



2. Put glue on the back.



3. Cut along the dashed line.

